

PIX -PowerWare®

Power Transmission Products

Pulley & Coupling Catalogue



www.pixtrans.com

Pulleys

Dual-Duty Pulleys



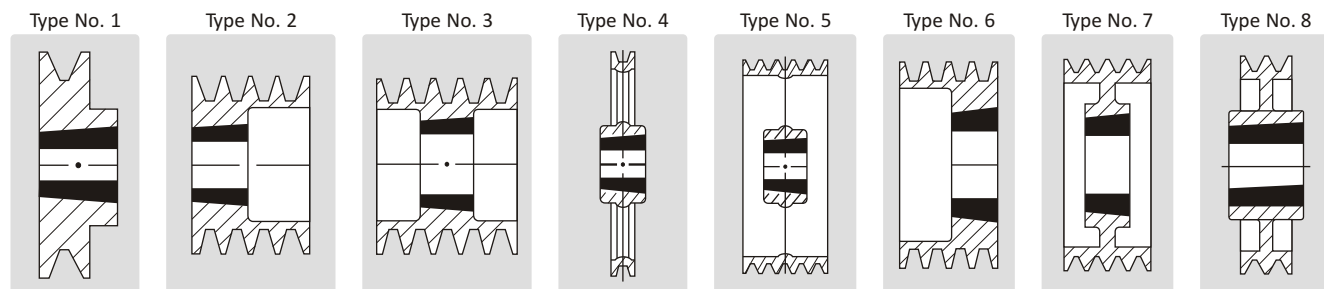
Features

- Superior quality, high material grade pulley with less wear of grooves
- Pulley grooves specification conforms to IS 3142 & ISO 4183 standards
- Dual duty grooves suitable for Classical & Wedge Belts
- Eliminates re-boring & key-way problem
- Easy interchangeable on different sizes shaft
- Convenient in assembling & dismantling of drive
- Fast installation & low maintenance down time
- Customized pulleys viz. soil, split, arm-type, flywheel etc are available upon request

Product range:

- 1A/SPA, 2A/SPA, 3A/SPA, 4A/SPA, 5A/SPA, 6A/SPA
- 1B/SPB, 2B/SPB, 3B/SPB, 4B/SPB, 5B/SPB, 6B/SPB, 8B/SPB, 10B/SPB
- 3C/SPC, 4C/SPC, 5C/SPC, 6C/SPC, 7C/SPC, 8C/SPC, 10C/SPC
- 1Z/SPZ, 2Z/SPZ, 3Z/SPC, 4Z/SPZ, 5Z/SPZ
- * Other non standard sizes available on request

Types of Pulleys:



Minimum Recommended Pulley Diameters

Section	Minimum Recommended Pulley Diameter (mm)
Z	50.0
A	71.0
B	112.0
C	180.0
SPZ	63.0
SPA	90.0
SPB	140.0
SPC	224.0
3V	63.0
5V	140.0
8V	335.0

Section	Minimum Recommended Pulley Diameter (mm)
ZX	40.0
AX	63.0
BX	90.0
CX	140.0
XPZ	56.0
XPA	71.0
XPB	112.0
XPC	180.0
3VX	56.0
5VX	112.0
8VX	254.0

Pulleys

PIX-PowerWare®

Poly-V Pulleys



Features:

- Energy saving drive
- Suitable for higher power transmission
- Compact drive against conventional V-Belt drive
- Easy Belt installation as single Belt drive, low down-time
- Higher speed ratio
- High power efficiency
- Low noise level
- Less maintenance

Product range:

- PJ/8 grooves, PJ/12 grooves, PJ/16 grooves, PJ/20 grooves,
 - PL/8 grooves, PL/12 grooves, PL/16 grooves, PL/20 grooves
 - PM/8 grooves, PM/12 grooves, PM/16 grooves, PM/20 grooves,
- * Other non standard sizes available on request

Timing Pulleys



Features:

- Positive engagement drive
- Easy installation
- Exact speed ratio
- No slippage
- High mechanical efficiency
- No jerk or vibrations in drive
- Less maintenance, no re-tensioning is required
- Low operation cost
- Compact drive

Product range:

- L 50 (Belt width: 1/2" or 13mm), L 75 (Belt width: 3/4" or 19mm), L 100 (Belt width: 1" or 25mm),
- H 100 (Belt width: 1" or 25mm), H 150 (Belt width: 1-1/2" or 38mm), H 200 (Belt width: 2" or 51mm), H 300 (Belt width: 3" or 76mm)
- 5M 15 (Belt width: 15mm), 8M 20 (Belt width: 20mm), 8M 30 (Belt width: 30mm), 8M 50 (Belt width: 50mm), 8M 85 (Belt width: 85mm)
- 14M 40 (Belt width: 40mm), 14M 55 (Belt width: 55mm), 14M 85 (Belt width: 85mm), 14M 115 (Belt width: 115mm)

* Other non standard sizes available on request

Taper Bushes



Sizes available:

- 1008, 1108, 1210, 1215, 1310, 1610, 1615, 2012, 2517, 2525, 3020, 3030, 3525, 3535, 4040, 4545, 5050

Couplings

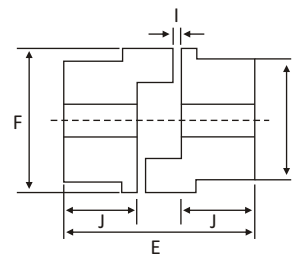
Star Couplings



Features:

- Ease of installation due to simple construction
- Low operational cost
- Star rubber element is only spare to be replaced in maintenance
- Available with spacer arrangement for distant shaft connection
- Quick snap-wrap element design available to avoid dismantling the connected machines
- High vibrations & shock load absorbing capacity
- Performance is unaffected with moisture, grease, oil & temperature up to 100°C

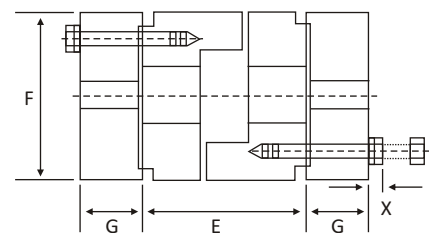
Standard Star Couplings



Product range:

Size	Bore (mm)		Dimensions(mm)					Power rating (Kw) at 100 RPM
	Min	Max	E	F	H	I	J	
PSC-095	15	28	60	54	49	2	25	0.20
PSC-100	20	38	88	65	57	2	35	0.50
PSC-110	20	32	108	85	76	3	43	0.91
PSC-150	30	48	115	96	80	3	45	1.51
PSC-190	36	55	133	115	102	3	54	2.02
PSC-225	40	60	153	127	108	3	64	2.74

Standard Spacer Jaw Couplings



Product range:

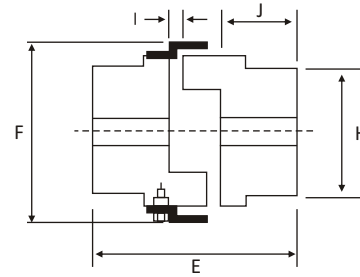
Size	Bore (mm)		Dimensions(mm)				Power rating (Kw) at 100 RPM
	Min	Max	E (DBSE)*	F	G	X	
PSC-095-S	15	28	90/100	54	25	6	0.20
PSC-0100-S	20	38	90/100/140	65	30	6	0.50
PSC-0110-S	20	42	90/100/140	85	35	8	0.91
PSC-0150-S	30	48	90/100/140	96	45	10	1.51
PSC-0190-S	36	55	90/100/140	115	51	10	2.02
PSC-0225-S	40	60	90/100/140	127	57	12	2.74

*DBSE- Distance between shaft ends

Couplings

Star Couplings

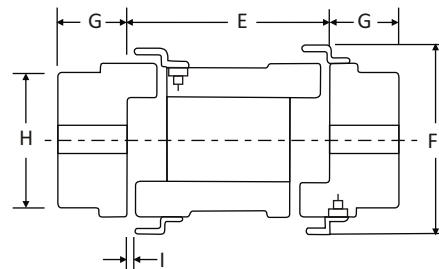
External Spider Star Couplings



Product range:

Size	Bore (mm)		Dimensions(mm)					Power rating (Kw) at 100 RPM
	Min	Max	E	F	H	I	J	
PSC-095 E	15	23	63	64	49	2	25	0.22
PSC-0100 E	20	38	88	77	57	2	35	0.49
PSC-0110 E	20	42	108	95	76	3	43	0.90
PSC-0150 E	30	48	115	110	80	3	45	1.48
PSC-0190 E	35	55	135	128	102	3	54	2.02
PSC-0225 E	40	60	153	141	108	3	64	2.80

External Spider Spacer Couplings



Product range:

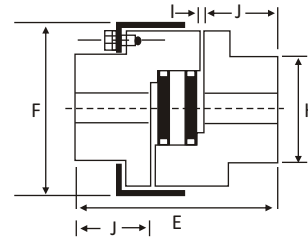
Size	Bore (mm)		Dimensions(mm)					Power rating (Kw) at 100 RPM
	Min	Max	E(DBSE)	F	G	H	I	
PSC-095-ES	15	28	90/100/140	64	25	49	2	0.22
PSC-0100-ES	20	38	90/100/140	77	35	57	2	0.49
PSC-0110-ES	20	42	90/100/140	95	43	76	3	0.90
PSC-0150-ES	30	48	90/100/140	110	45	80	3	1.47
PSC-0190-ES	36	55	90/100/140	128	54	102	3	2.02
PSC-0225-ES	40	60	90/100/140	141	64	108	3	2.80

*DBSE- Distance between shaft ends

Couplings

Star Couplings

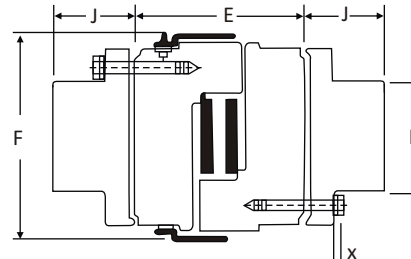
Cushion Star Couplings



Product range:

Size	Bore (mm)		Dimensions(mm)					Power rating (Kw) at 100 RPM
	Min	Max	E	F	H	I	J	
PSC-0226-P	25	65	178	143	115	3	70	3.44
PSC-0276-P	25	75	200	163	127	3	80	5.61
PSC-0280-P	30	75	200	200	140	3	80	8.20
PSC-0295-P	40	90	238	245	160	3	95	13.35
PSC-2955-P	50	100	264	245	180	3	108	22.30

Cushion Star Spacer Couplings



Product range:

Size	Bore (mm)		Dimensions(mm)					Power rating (Kw) at 100 RPM
	Min	Max	E (DBSE)*	F	J	H	X	
PSC-226-PS	25	65	135/140/180	145	50	134	12	3.44
PSC-276-PS	25	75	135/140/180	165	60	130	12	5.60
PSC-280-PS	30	75	135/140/180	200	60	130	14	8.19
PSC-295-PS	40	90	135/140/180	249	65	160	16	13.38
PSC-2955-PS	50	90	135/140/180	249	80	160	16	22.38

*DBSE- Distance between shaft ends

Application: General machine tools, packaging machinery, conveyors, elevators, pumps, ball mill beaters and colanders, blowers, pumps including back-pull type, conveyors, elevators, packaging machinery, food processing plants, compressors, general machine tools, blowers, paper mill beaters and calendars, etc.

Couplings

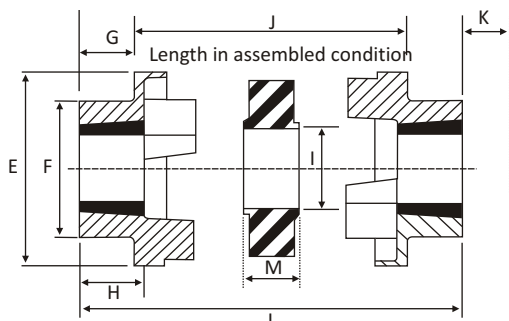
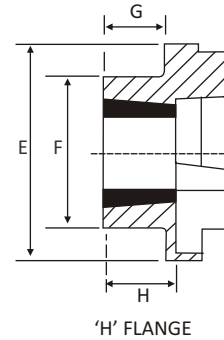
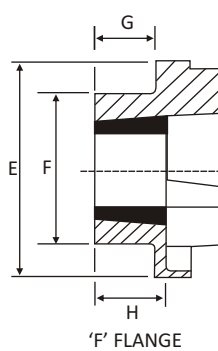
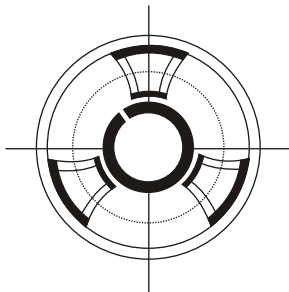
PIX-PowerWare®

PHRC Couplings

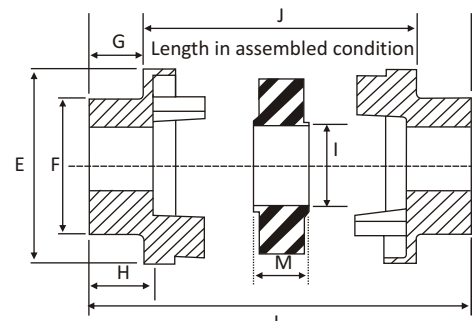


Features:

- Permits easy installation & removal by means of Taper Bush option
- Reliable design due to interacting wedges pattern
- Capable to sustain incidental misalignment
- Exceptional performance at lower costs
- Suitable for flywheel applications
- Peak loads are reduced by a flexible component, as a prime design consideration
- Available in both Pilot Bore & Taper Lock design



HRC ASSEMBLY - F&H TYPE (TAPER LOCK)



HRC ASSEMBLY - 'B' TYPE

Product range:

Size	Type B						Type F & H								E (mm)	F (mm)	I (mm)	M (mm)	Power rating (Kw) at 100 RPM
	Min Bore (mm)	Max Bore (mm)	G (mm)	H (mm)	J (mm)	L (mm)	TLB Size	Min Bore (mm)	Max Bore (mm)	G (mm)	H (mm)	J (mm)	L (mm)	K* (mm)					
PHRC-070	10	32	20	24	26.0	66.0	1008	9	25	20.0	24	26.0	66.0	29	69	60	31	18.0	0.35
PHRC-090	10	35	26	30	30.5	82.5	1108	9	28	19.5	24	31.5	70.5	29	85	70	32	22.5	0.85
PHRC-110	10	55	37	45	45.0	119.0	1210	11	32	18.5	27	46.0	83.0	38	112	100	45	29.0	1.70
PHRC-130	14	60	47	56	54.0	148.0	1610	14	42	18.0	27	54.0	90.0	39	130	105	50	36.0	3.35
PHRC-150	19	70	50	60	60.0	160.0	2012	14	50	23.5	34	61.0	108.0	44	150	115	62	40.0	6.35
PHRC-180	35	80	58	70	73.0	189.0	2517	16	60	34.5	47	74.0	163.0	48	180	125	77	49.0	10.0
PHRC-230	38	100	77	90	85.5	239.5	3020	25	75	39.5	53	86.5	165.5	55	225	155	99	59.5	21.0
PHRC-280	48	115	90	105	104.5	284.5	3525	35	90	51.0	67	106.5	208.5	67	275	206	119	74.5	33.0

Application

Agitators, brewing machinery, centrifugal blower, compressors, generators, conveyor position type pumps, wood working machinery, crane hoist, crushers, reciprocating conveyors, etc.

Couplings

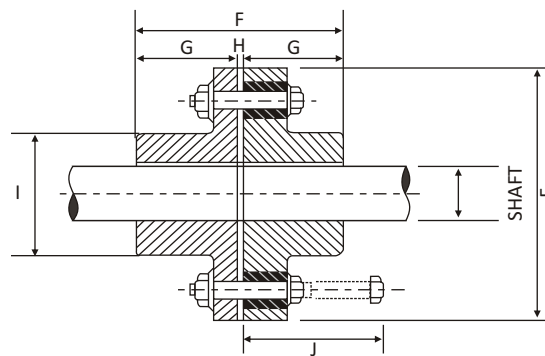
PIX-PowerWare®

Pin Bush Couplings



Features:

- Simple in construction
- Power transmission through high tensile bolts
- Highly stiff rubber Bushes are capable to bear the shock load
- Rubber bushes remain unaffected from water, oil or dust & suit to temperature up to 80°C
- Suitable for high speed drives
- On periodic maintenance, only Bushes have to be replaced as spares



Product range:

Size	No. of pins	Torque (nm)	Min bore (mm)	Max bore (mm)	Max. Speed RPM	E (mm)	F (mm)	G (mm)	H (mm)	I (mm)	J (mm)	Power rating (Kw) at 100 RPM
PBC-1	3	78	12.7	28	6000	95	79	38	3	40	58	0.83
PBC-2	4	310	12.7	30	5100	114	99	48	3	42	70	3.24
PBC-2A	6	517	16.0	42	4400	130	105	51	3	60	70	5.50
PBC-3	4	620	16.0	48	3600	160	107	50	5	68	114	6.50
PBC-4	4	830	20.0	65	3000	191	125	60	5	90	114	8.60
PBC-4A	6	1240	20.0	65	3000	191	125	60	5	90	114	12.90
PBC-5	6	1660	25.0	75	2580	225	156	76	5	105	114	17.30
PBC-6	8	2360	45.0	95	2880	254	183	89	5	135	114	24.50
PBC-6A	10	2930	45.0	95	2880	254	183	89	5	135	114	30.50
PBC-6B	12	3530	45.0	95	2880	254	183	89	5	135	114	37.00
PBC-7	12	4152	60.0	115	1940	290	235	115	5	170	114	43.50
PBC-7A	14	5196	60.0	120	1920	300	235	115	5	180	130	54.50
PBC-8	16	5817	65.0	130	1840	310	255	125	5	195	130	58.50
PBC-8A	18	7270	65.0	135	1640	340	265	130	5	210	130	76.00
PBC-8B	12	8730	70.0	140	1580	360	276	135	5	210	200	91.50
PBC-9	13	9930	80.0	150	1460	390	316	165	6	225	200	104.00
PBC-9A	15	13275	90.0	160	1420	410	336	165	6	240	200	138.50
PBC-10	16	14421	100.0	170	1330	440	366	180	6	255	200	150.00
PBC-10A	17	18021	110.0	180	1220	480	386	190	6	270	212	188.80
PBC-11	20	23780	120.0	190	1060	530	406	200	6	285	212	248.60

* Apart from above, higher range sizes would be available on request.

Application

Even torque machines: Centrifugal pumps, blowers, small fans, generators, wire mills, cement mills, small printing presses, single crank compressors & pumps, hammers, ball & tube mills, rolling mills, cranes & winches, rock and stone crushers, light machine tools, beaters, exhausters, alternators, textile machines.

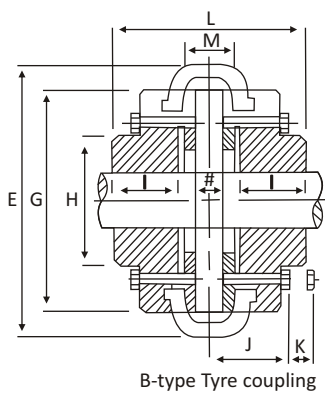
Couplings

Tyre Couplings

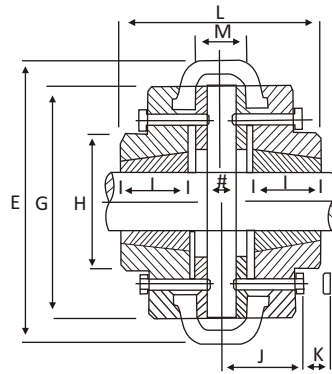


Features:

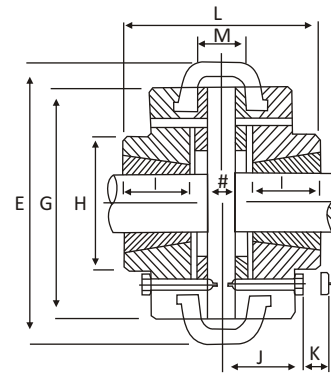
- Higher torque capacity
- High misalignment bearing capacity i.e axial, parallel & angular
- Dampens vibrations & torsional oscillations in drive
- No lubrication required as there is no relative motion between coupling parts
- Easy tyre replacement without dismantling driver or driven position
- Available with taper bush facility in “F” & “H” type flanges
- Easy installation requiring no special tools or skilled labour
- Suitable to operate in robust environmental conditions



B-type Tyre coupling



F- Type Tyre Coupling



H-Type Tyre Coupling

Product range:

Size	Type B							Type F & H							E (mm)	G (mm)	K (mm)*	M (mm)**	No. of screw per flange	Power rating (Kw) at 100 RPM	Max. Speed RPM		
	Max Bore (mm)	Min Bore (mm)	L (mm)	H (mm)	I (mm)	J (mm)	Set screw on key	Appx. Wt. (Kgs)	Bush No.	Max Bore (mm)	L (mm)	H (mm)	I (mm)	J (mm)								W (mm)	Appx. Wt. (Kgs)
PTC-40	30	11.0	67	-	22	33.5	M5	2.0	1008	25	67	-	22	33.5	29	1.4	104	82	43	23	4	0.2	4500
PTC-45	32	11.0	73	-	25	36.5	M5	2.2	1008	28	67	-	22	33.3	29	3.0	120	94	43	23	4	0.4	4500
PTC-50	38	16.0	92	79	32	46.0	M5	4.1	1210	32	78	79	25	39.0	38	3.1	134	100	43	28	4	0.6	4500
PTC-60	48	16.0	112	73	38	43.0	M6	5.0	1610	42	86	103	25	43.0	38	5.2	165	125	43	36	5	1.1	4000
PTC-70	55	19.1	132	82	45	50.5	M6	8.0	1610	42	92	76	25	50.5	38	7.4	197	144	10	42	5	1.7	3600
PTC-80	65	25.4	149	95	51	53.0	M10	12.0	2012	50	111	95	32	53.0	47	9.2	211	167	10	47	6	2.65	3100
PTC-85	70	31.8	154	103	53	53.5	M12	14.0	2012	50	112	103	32	53.5	47	12.5	222	179	13	48	6	3.2	3000
PTC-90	76	31.8	164	110	57	59.5	M12	15.0	2517	60	140	110	45	59.5	50	15.0	235	188	13	50	6	3.8	2880
PTC-100	85	31.8	178	124	60	61.5	M12	21.0	2517	60	148	124	45	61.5	50	20.0	254	216	13	58	6	5.3	2600
PTC-110	90	31.8	180	134	65	63.5	M12	28.0	2517	60	140	134	45	63.5	50	26.5	279	233	14	50	6	7.4	2300
PTC-120	102	38.1	207	152	76	70.0	M12	41.0	3020	75	157	152	51	70.0	68	35.5	314	264	14	55	6	12.5	2050
PTC-140	120	75.0	204	195	89	76.0	M20	61.0	3535	90	204	198	89	76.0	89	67.2	359	313	14	26	8	19.5	1800
PTC-160	140	75.0	220	216	102	78.0	M20	86.0	4040	100	220	216	102	78.0	110	91.0	402	345	19	16	8	32.6	1600
PTC-180	150	75.0	258	266	114	94.0	M20	141.0	4545	110	258	266	114	94.0	126	146.0	470	398	19	30	10	57.6	1500
PTC-200	150	75.0	276	266	114	103.0	M20	179.0	4545	110	278	266	114	103.0	126	182.0	508	429	19	48	12	84.0	1300
PTC-220	160	90.0	312	267	127	118.0	M20	312.0	5050	125	312	267	127	118.0	140	320.0	562	474	20	56	12	105.0	1100
PTC-250	190	100.0	360	290	150	125.0	M20	500.0	-	-	-	-	-	-	-	-	628	532	25	60	12	131.5	1000

* K is the distance by which the clamping screws need to be withdrawn for the easy release of the tyre

** M is the distance between the flanges

Denote shaft ends, normally M part can project beyond the flanges. In this case allow sufficient space between the shaft ends for misalignment and floating

Application : Agitators, Brewing Machinery, Centrifugal Compressors & Pumps, Belt Conveyors, Line shafts, general machine tools, Clay working machinery, Paper mill beaters and winders, Rotary pumps, Bucket elevators, Cooling tower fans, Foundry machines, Paper mill calendars, Gyrotory crushers, etc.

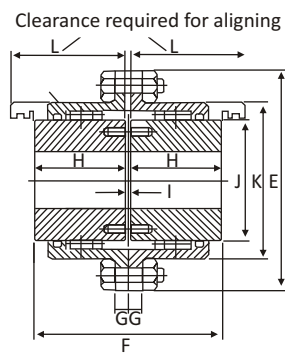
Couplings

Gear Couplings

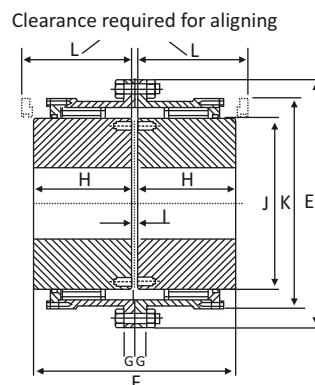


Features:

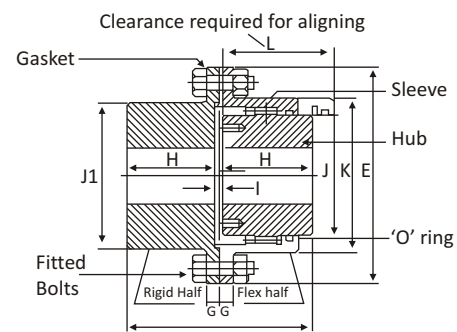
- Sustain very high torque rating
- Suitable for high speed applications
- Heavy duty design with flexibility
- Counters all types misalignment i.e. axial, parallel & angular & large axial movement capacity
- Suitable for high temperature environment up to 120°C
- Specially designed crowned teeth reduces backlash & radial clearance
- Gear Hubs are machined for proper meshing of Gears as well as for Inter-changeability
- Available in full flexible & half flexible design as per suitability & requirement



Coupling sizes 1 to 10



Coupling sizes 11 to 12



Half Flexible Couplings

Product range:

Coupling Size	Hub Bore(mm)			Dimensions (mm)									Power rating (kW) at 100 RPM	Max. Speed RPM
	Rigid Max.	Flex Min	Flex Max	E	F	G	H	I	J	J1	K	L		
PGC-1	60	14	55	170	115	17	55	5	78	90	110	65	11.5	6700
PGC-2	75	20	60	185	145	17	70	5	85	110	125	85	28.5	6100
PGC-3	90	30	75	220	175	20	85	5	107	130	150	105	51.5	5200
PGC-4	110	40	100	250	215	20	105	5	138	160	178	125	96.5	4500
PGC-5	130	46	120	290	240	25	115	10	166	185	204	140	150.0	3950
PGC-6	150	50	125	320	260	25	125	10	176	215	230	155	230.0	3500
PGC-07	170	60	145	350	290	25	140	10	208	240	260	175	390.0	3250
PGC-08	200	70	165	380	330	25	160	10	230	285	290	200	515.0	3000
PGC-09	220	80	200	430	340	25	165	10	270	315	332	210	644.0	2600
PGC-10	260	100	230	490	370	25	180	10	315	370	390	230	930.0	2300
PGC-11	280	110	260	545	410	30	200	10	350	380	445	270	1265.0	2100
PGC-12	310	150	300	590	490	30	240	10	404	420	490	300	1600.0	1900

* Apart from above, higher range sizes would be available on request.

Application:

Metal Rolling mills, Paper Machinery, Cranes, Dredgers, Rubber and plastic Industries, Cement Plants, Conveyors and Elevators, Compressors, Fans and Blowers, Screens and other General Industries.

Couplings

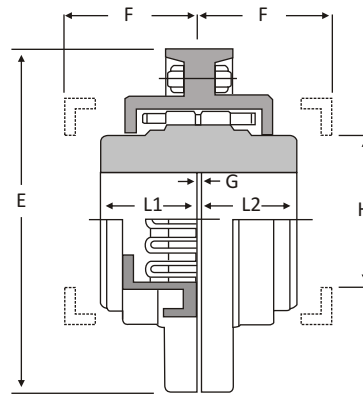
PIX-PowerWare®

Resilient / Grid Couplings (Type Z)



Features:

- Combination of high power rating & high flexibility like elastomer
- 100% metallic parts make it suitable for high ambient temperatures
- Robust construction and has no fast wearing component
- Flexible grid / springs are quickly replaceable without disturbing connected equipment
- Protection against shaft misalignment
- Sustain & reduce the vibrations while transmitting power



Type Z PRC

- * E=Clear diameter
- * L1 & L2= Boss length
- * G=Gap
- * F= Removal space
- * H=Cover bore

Product range:

Coupling Size	Min. Bore (mm)	Max. Bore (mm)	E (mm)	L1 (mm)	L2 (mm)	F (mm)	G (mm)	H (mm)	Power rating (Watt) at 100 RPM	Max. Speed RPM
PRC-1	10.00	29.00	105.00	38.00	38.00	52.00	0.85	44.52	4.41	5650
PRC-2	12.00	38.00	120.50	38.00	38.00	52.00	0.85	58.80	7.35	4750
PRC-3	16.00	41.00	144.50	44.50	44.50	59.00	0.85	62.00	14.70	4450
PRC-4	16.00	57.00	171.50	51.00	51.00	59.00	0.85	87.45	22.05	3400
PRC-6	16.00	54.00	190.50	51.00	51.00	79.00	0.85	84.25	33.07	3200
PRC-7	16.00	64.00	197.00	57.00	57.00	79.00	0.85	96.95	47.00	2950
PRC-8	25.00	78.00	222.00	63.50	63.50	79.00	0.85	119.20	69.83	2500
PRC-9	25.00	92.00	254.00	70.00	70.00	80.00	0.85	143.00	91.88	2150
PRC-10	25.00	108.00	276.00	89.00	89.00	80.00	0.85	165.20	135.98	1900
PRC-11	38.00	102.00	295.00	101.00	101.00	128.00	1.60	155.70	260.93	1800
PRC-13	50.00	123.00	324.00	101.50	101.50	147.00	1.60	187.46	339.28	1650
PRC-14	50.00	121.00	336.50	101.50	101.50	147.00	1.60	184.28	488.00	1550
PRC-15	50.00	146.00	375.00	114.00	114.00	147.00	1.60	222.38	674.00	1350
PRC-17	50.00	167.00	425.50	127.00	127.00	147.00	1.60	254.00	935.00	1200

* Apart from above, higher range sizes would be available on request.

Application

Agitator, Blower & Compressor, Conveyor, Crane & Hoist, Crushers, Generators, Elevators, Escalators, Extruders (Plastic & rubber), Feeders, Hammer Mill, Cement or Mines, Rotary for Cement, Mining line shaft, Machine tools, Mixers, Cooling tower, Fans & Pumps etc.



Corporate Office & Works

PIX TRANSMISSIONS LIMITED

J-7, M.I.D.C. Hingna Road,
Nagpur - 440 016. Maharashtra. India
Tel.: +91-(0)-7104 669 000
Fax: +91-(0)-7104 669 007/8
E-mail: info@pixtrans.com
Website: www.pixtrans.com

Overseas Offices

PIX Transmissions (Europe) Limited

12, Sterling Complex, Farthing Road,
Ipswich, Suffolk IP1 5AP
United Kingdom
Tel.: +44 (0) 1473-743 511
Fax : +44 (0) 1473-742 227
E-mail: info@pixtranseu.com
Website: www.pixtranseu.com

PIX Germany GmbH

Karl-Schurz-Str. 35,
33100 Paderborn,
Germany
Tel.: +49 (0) 5251-2844 070
Fax: +49 (0) 5251-2844 099
E-mail: info@pixgermany.com
Website: www.pixgermany.de

PIX Middle East Trading LLC

P. O. Box 238085, Al Quasis Ind-2,
Near RAK Bank, Dubai, U.A.E.
Tel.: +971-4-2345 100
Fax: +971-4-2345 101
E-mail: info@pixme.ae
Website: www.pixme.ae

PIX Middle East FZC

P. O. Box No. 54526,
Technology Park 16/1,
R.A.K. Free Trade Zone,
Ras-Al-Khaimah,
United Arab Emirates
Tel.: +971-7-2444366
Fax: +971-7-2444367
E-mail: info@pixme.ae
Website: www.pixme.ae

Global Presence



Other Products

- Industrial Belts
- Automotive Belts
- Agricultural Belts
- Packaging Belts
- Special construction Belts

Authorised Business Partner

56 8M 50 TMP **www.pixtrans.com**